

TURBOAIR Upright Chillers & Freezers



Fan control system



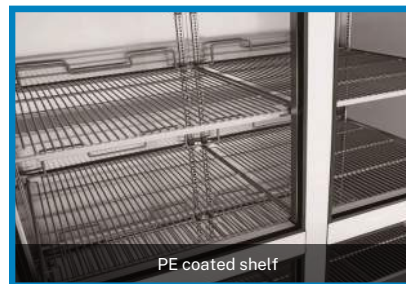
Front digital controller



Drain water evaporation system



LED interior



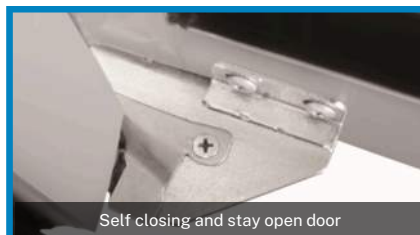
PE coated shelf



High efficient compressor system



Easy grip recessed door handle



Self closing and stay open door

TURBOAIR Upright Chillers & Freezers



KR25-2 / KF25-2 /
KR25-2P / KF25-2P



KR45-4 / KF45-4 /
KR45-4P / KF45-4P



KR65-6 / KF65-6 /
KR65-6P / KF65-6P



KR25-1G



KR45-2G



KR65-3G



KF25-1G



KF45-2G

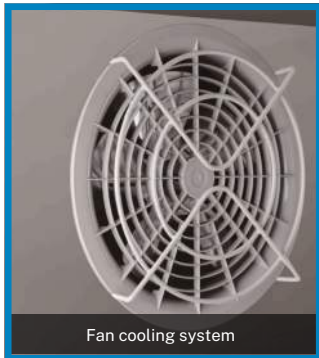
Description	Model	Capacity	Dimension (mm)	Power (Watt)	Temp. (°C)
Upright Chiller 2 Half Solid Door	KR25-2	572	640 x 800 x 1926	314	+1/+8
Upright Chiller 4 Half Solid Door	KR45-4	1210	1260 x 800 x 1926	366	+1/+8
Upright Chiller 6 Half Solid Door	KR65-6	1868	1900 x 800 x 1926	732	+1/+8
Upright Freezer 2 Half Solid Door	KF25-2	572	640 x 800 x 1926	496	-21/-12
Upright Freezer 4 Half Solid Door	KF45-4	1210	1260 x 800 x 1926	774	-21/-12
Upright Freezer 6 Half Solid Door	KF65-6	1868	1900 x 800 x 1926	1,346	-21/-12
Upright Chiller 2 Half Solid Door Bun Pan Version (14 600x400mm Capacity)	KR25-2P	572	640 x 800 x 1926	314	+1/+8
Upright Chiller 4 Half Solid Door Bun Pan Version (28 600x400mm Capacity)	KR45-4P	1210	1260 x 800 x 1926	366	+1/+8
Upright Chiller 6 Half Solid Door Bun Pan Version (42 600x400mm Capacity)	KR65-6P	1868	1900 x 800 x 1926	732	+1/+8
Upright Freezer 2 Half Solid Door Bun Pan Version (14 600x400mm Capacity)	KF25-2P	572	640 x 800 x 1926	496	-21/-12
Upright Freezer 4 Half Solid Door Bun Pan Version (28 600x400mm Capacity)	KF45-4P	1210	1260 x 800 x 1926	774	-21/-12
Upright Freezer 6 Half Solid Door Bun Pan Version (42 600x400mm Capacity)	KF65-6P	1868	1900 x 800 x 1926	1,346	-21/-12
Upright Chiller 1 Full Glass Door	KR25-1G	572	640 x 800 x 1926	314	+1/+8
Upright Chiller 2 Full Glass Door	KR45-2G	1215	1260 x 800 x 1926	366	+1/+8
Upright Chiller 3 Full Glass Door	KR65-3G	1876	1900 x 800 x 1926	732	+1/+8
Upright Freezer 1 Full Glass Door	KF25-1G	572	640 x 800 x 1926	660	-21/-12
Upright Freezer 2 Full Glass Door	KF45-2G	1215	1260 x 800 x 1926	976	-21/-12

*All units voltage 220V/50Hz/1Ph



Click here to return to the table of contents

TURBOAIR Undercounter Chillers & Freezers



Fan cooling system



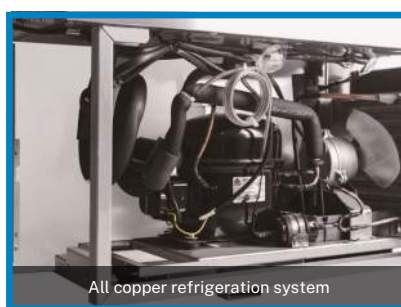
Stainless steel drawers



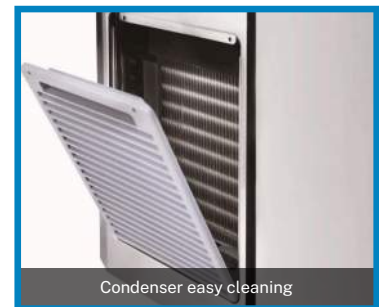
LED interior



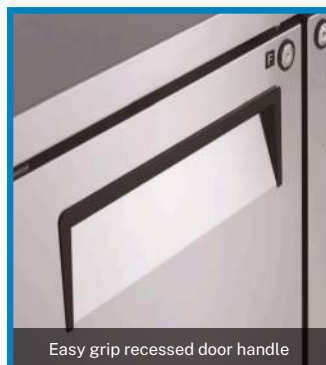
Front digital controller



All copper refrigeration system



Condenser easy cleaning



Easy grip recessed door handle



PE coated shelf

TURBOAIR Undercounter Chillers & Freezers

KUR9-1 / KUF9-1

KUR12-2 / KUF12-2

KUR15-2 / KUF15-2

KUR18-3 / KUF18-3

KGR9-1

KGR12-2

KGR15-2

KGR18-3

Description	Model	Capacity (Liter)	Dimension (mm)	Power (Watt)	Temp. (°C)
Undercounter Chiller 1 Door	KUR9-1	198	900 x 700 x 850	314	+1/+8
Undercounter Chiller 2 Door	KUR12-2	311	1200 x 700 x 850	314	+1/+8
Undercounter Chiller 2 Door	KUR15-2	425	1500 x 700 x 850	314	+1/+8
Undercounter Chiller 3 Door	KUR18-3	538	1800 x 700 x 850	366	+1/+8
Undercounter Freezer 1 Door	KUF9-1	198	900 x 700 x 850	366	-21/-12
Undercounter Freezer 2 Door	KUF12-2	311	1200 x 700 x 850	613	-21/-12
Undercounter Freezer 2 Door	KUF15-2	425	1500 x 700 x 850	613	-21/-12
Undercounter Freezer 3 Door	KUF18-3	538	1800 x 700 x 850	613	-21/-12
Undercounter Chiller 1 Glass Door	KGR9-1	198	900 x 700 x 850	314	+1/+8
Undercounter Chiller 2 Glass Door	KGR12-2	311	1200 x 700 x 850	314	+1/+8
Undercounter Chiller 2 Glass Door	KGR15-2	425	1500 x 700 x 850	314	+1/+8
Undercounter Chiller 3 Glass Door	KGR18-3	538	1800 x 700 x 850	366	+1/+8

*All units voltage 220V/50Hz/1Ph

*Undercounter units are also available with optional 600mm depth on requests



TURBOAIR Undercounter Chiller (Door/Drawer)



KUR9-2D-2



KUR12-2D-4



KUR15-2D-2



KUR18-2D-2



KUR9-3D-3



KUR12-3D-6



KUR15-3D-3



KUR18-3D-9

Description	Model	Capacity (Liter)	Dimension (mm)	Power (Watt)	Temp. (°C)
2 x 1/2 Drawer	KUR9-2D-2	198	900 x 700 x 850	314	+1/+8
1 Door + 2 x 1/2 Drawer	KUR12-2D-2	311	1200 x 700 x 850	314	+1/+8
4 x 1/2 Drawer	KUR12-2D-4	311	1200 x 700 x 850	314	+1/+8
1 Door + 2 x 1/2 Drawer	KUR15-2D-2	425	1500 x 700 x 850	314	+1/+8
4 x 1/2 Drawer	KUR15-2D-4	425	1500 x 700 x 850	314	+1/+8
2 Door + 2 x 1/2 Drawer	KUR18-2D-2	538	1800 x 700 x 850	366	+1/+8
1 Door + 4 x 1/2 Drawer	KUR18-2D-4	538	1800 x 700 x 850	366	+1/+8
6 x 1/2 Drawer	KUR18-2D-6	538	1800 x 700 x 850	366	+1/+8
3 x 1/2 Drawer	KUR9-3D-3	198	900 x 700 x 850	314	+1/+8
1 Door + 3 x 1/2 Drawer	KUR12-3D-3	311	1200 x 700 x 850	314	+1/+8
6 x 1/2 Drawer	KUR12-3D-6	311	1200 x 700 x 850	314	+1/+8
1 Door + 3 x 1/2 Drawer	KUR15-3D-3	425	1500 x 700 x 850	314	+1/+8
6 x 1/2 Drawer	KUR15-3D-6	425	1500 x 700 x 850	314	+1/+8
2 Door + 3 x 1/2 Drawer	KUR18-3D-3	538	1800 x 700 x 850	366	+1/+8
1 Door + 6 x 1/2 Drawer	KUR18-3D-6	538	1800 x 700 x 850	366	+1/+8
9 x 1/2 Drawer	KUR18-3D-9	538	1800 x 700 x 850	366	+1/+8

*All units voltage 220V/50Hz/1Ph

*Drawer units are also available in freezer type, except KUR18 only available in chiller type

Preparation Tables/Counters



KHR9-1



KHR15-2



KHR18-3



KSR9-1



KSR12-2



KSR18-3



KTR9-1



KTR15-2



KTR18-3

Description	Model	Capacity (Liter)	Dimension (mm)	Power (Watt)	Temp. (°C)
Salad Prep Table 1 Door (6 x GN1/3)	KSR9-1	213	900 x 700 x 850	314	+1/+8
Salad Prep Table 2 Door (9 x GN1/3)	KSR12-2	309	1200 x 700 x 850	314	+1/+8
Salad Prep Table 2 Door (12 x GN1/3)	KSR15-2	420	1500 x 700 x 850	314	+1/+8
Salad Prep Table 3 Door (15 x GN1/3)	KSR18-3	516	1800 x 700 x 850	366	+1/+8
Salad Prep Table 1 Door with Hood Lid (8 GN1/6)	KHR9-1	213	900 x 700 x 978	314	+1/+8
Salad Prep Table 2 Door with Hood Lid (12 GN1/6)	KHR12-2	309	1200 x 700 x 978	314	+1/+8
Salad Prep Table 2 Door with Hood Lid (14 GN1/6)	KHR15-2	420	1500 x 700 x 978	314	+1/+8
Salad Prep Table 3 Door with Hood Lid (18 GN1/6)	KHR18-3	516	1800 x 700 x 978	366	+1/+8
Pizza Table 1 Door (4 GN1/3)	KTR9-1	213	900 x 700 x 919	314	+1/+8
Pizza Table 2 Door (6 GN1/3)	KTR12-2	309	1200 x 700 x 919	314	+1/+8
Pizza Table 2 Door (6 GN1/3 + 2 GN1/4)	KTR15-2	420	1500 x 700 x 919	314	+1/+8
Pizza Table 3 Door (9 GN1/3)	KTR18-3	516	1800 x 700 x 919	366	+1/+8



Chef Base and Back Bar



TCB12-2



TCB15-4



TB9-8H-SWBBB



TB9-8H-SWSSS



TB9-8H-SLBBB



TB9-8H-SLSBS



TB13-8H-SW-SSS

Description	Model	Capacity (Liter)	Dimension (mm)	Power (Watt)	Temp. (°C)
Chef Base					
Chef Base Refrigerator 2 Drawer (12 GN1/3)	TCB12-2	311	1200 x 700 x 585	314	+1/+8
Chef Base Refrigerator 4 Drawer (18 GN1/3)	TCB15-4	538	1500 x 700 x 585	366	+1/+8
Chef Base Refrigerator 4 Drawer (24 GN1/3)	TCB18-4	651	1800 x 700 x 585	366	+1/+8
Back Bar					
Backbar Cooler 1 Swing Door	TB6-8H-SW	117	600 x 550/586 x 802	270	+1/+8
Backbar Cooler 2 Swing Door	TB9-8H-SW	184	900 x 550/586 x 802	270	+1/+8
Backbar Cooler 3 Swing Door	TB13-8H-SW	286	1350 x 550/586 x 802	290	+1/+8
Backbar Cooler 2 Sliding Door	TB9-8H-SL	159	900 x 490 x 802	270	+1/+8
Backbar Cooler 3 Sliding Door	TB13-8H-SL	246	1350 x 490 x 802	290	+1/+8

*SW = Swing Door, SL = Sliding Door

*SSS = all stainless steel finish, BBB = all black coated finish, SBS = stainless steel finish with black door frame

Rectangle Bakery Cases



*The model shown in the picture is TBP1800-1



*The model shown in the picture is TBP2100-2

Model	TBP900-1	TBP1200-1	TBP1500-1	TBP1800-1	TBP2100-1	TBP2400-1
Ext. Dimension	900 x 700 x 1170	1200 x 700 x 1170	1500 x 700 x 1170	1800 x 700 x 1170	2100 x 700 x 1170	2400 x 700 x 1170
Capacity (L)	255	345	440	530	620	710
Power (Watt)	620	670	830	850	880	920

Model	TBP900-2	TBP1200-2	TBP1500-2	TBP1800-2	TBP2100-2	TBP2400-2
Ext. Dimension	900 x 700 x 1370	1200 x 700 x 1370	1500 x 700 x 1370	1800 x 700 x 1370	2100 x 700 x 1370	2400 x 700 x 1370
Capacity (L)	355	485	615	740	870	1000
Power (Watt)	670	830	850	880	920	970

Chocolate Cases



*The model shown in the picture is TCD-1500



Rail-mounted Drawers

Open and close smoothly.
Convenient access with fast service.



Back Refrigeration Storage Space

Open and close smoothly.
Convenient access with fast service.



Mini-LED Lamp

Mini-LED Lamp makes display more clear and gorgeous.

Model	TCD-900	TCD-1200	TCD-1500	TCD-1800	TCD-2100
Ext. Dimension	900 x 800 x 1060	1200 x 800 x 1060	1500 x 800 x 1060	1800 x 800 x 1060	2100 x 800 x 1060
Capacity (L)	211	288	345	410	475
Power (Watt)	800	900	970	1080	1150

Gelato Showcase



Model	TGL-10	TGL-12
Dimension (mm)	1050 x 875 x 1260	1250 x 875 x 1260
Capacity (L)	268	362
Pan Capacity*	10 GN 1/4	12 GN 1/4
Inner Temp (deg C)	-16 / -20	-16 / -20
Doors	2	2
Voltage	220/1/50	220/1/50
Power (kW)	0.95	1.05

*The model shown in the picture is TGL-12

Pan capacity calculation based on GN1/4 (256*162mm) pans

Climate class 3 category (Environment Requirement): ambient 25 deg C, Humidity 60% (recommended to work under air-conditioned environment)

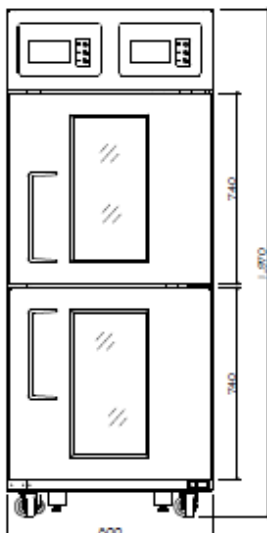
Retarder Proofer / Dough Conditioner



TDC-36-2R:

- Dimension: 800 x 1230 x 1970 mm
- Capacity (Volume): 2 x 400 liter
- Capacity (Tray): 36 x 600 x 400 mm trays (70 mm pitch)
- Temperature: -10 ~ +45 C
- Humidity: 30% ~ 90%
- Control: LCD Touch Digital
- Door Type: 2 Swing Door with Glass Viewing
- Voltage: 2 x 220/50/1
- Electric Power: 2 x 540 Watt

The dough conditioner / retarder proofer from Turboair is designed to support the preparation of baking-related products.



Product Features:

- LCD touch screen with easy-to-use interface and convenient to operate
- Smart quick menu setting: menu-presetting function, pattern memory function
- Automatic humidity control system (patented): this function provides the best dough condition, and solves the problem that the humidity cannot be adjusted when it is too high
- Automatic drying system
- Radiused corners inside the cabinet are designed for easy cleaning and better air circulations
- Self-closing doors with stay open feature
- LED lighting

Open Cases Slim



Model	TOM500-4
Ext. Dimension	500 x 650 x 1910
Capacity (L)	140
Power (Watt)	650



Model	TOM500-2
Ext. Dimension	500 x 650 x 1510
Capacity (L)	100
Power (Watt)	600

Customizable Options

- SUS & Colored Steel
- Light colour
- Light guide plate
- LED lamp

Open Cases High



The model shown in the picture is TOH-1200



*TOH closed up display case



Air Curtain

Prevent the loss of cooling air, Optimize a storage environment.



Honeycomb Patterned Guide Panel

Ensure even distribution of cold air in the cabinet, so as to keep the temperature consistent.

Model	TOH-900	TOH-1200	TOH-1500	TOH-1800
Ext. Dimension	900 x 700 x 1910	1200 x 700 x 1910	1500 x 700 x 1910	1800 x 700 x 1910
Capacity (L)	340	470	600	730
Power (Watt)	800	880	950	1100